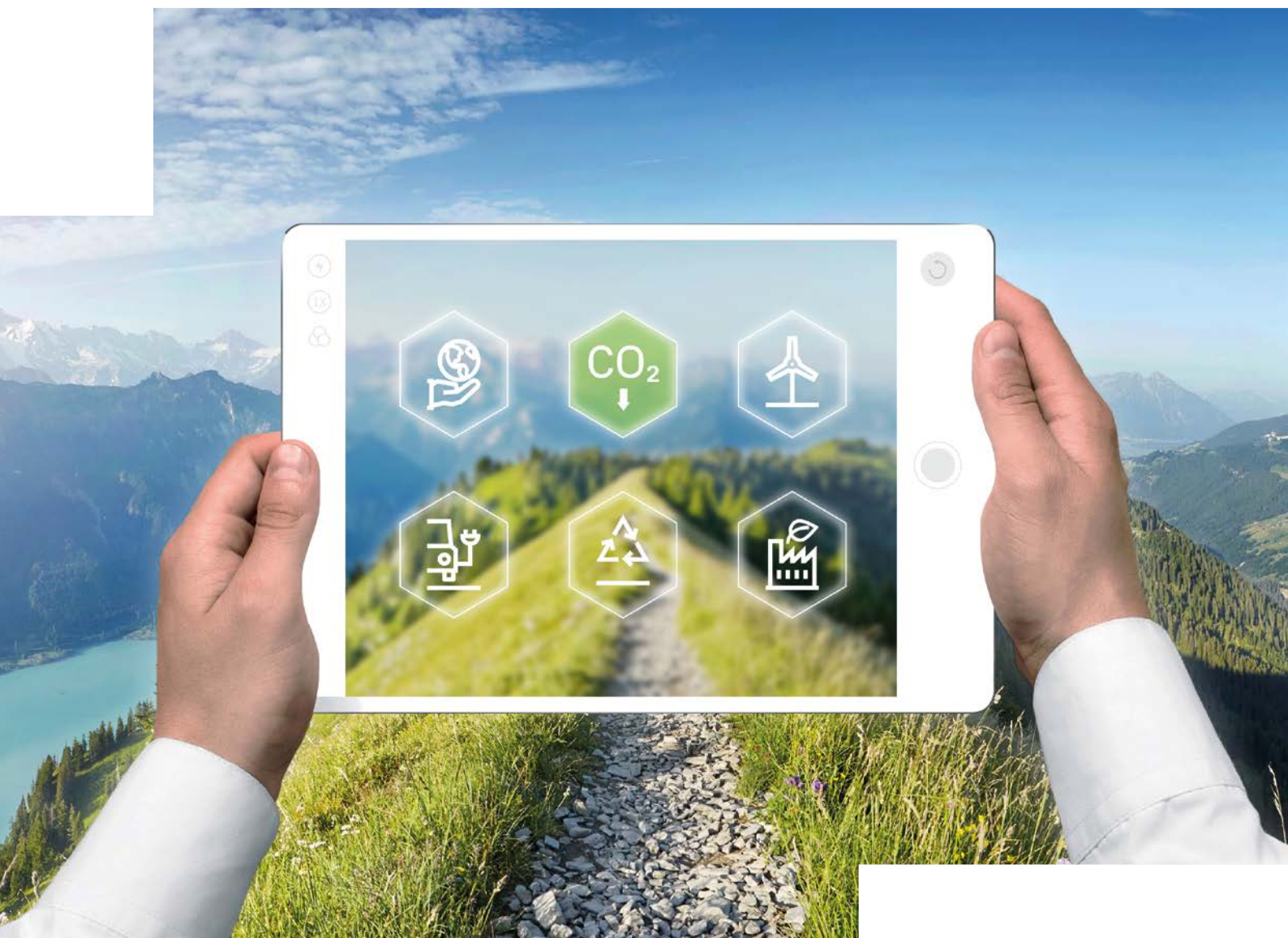


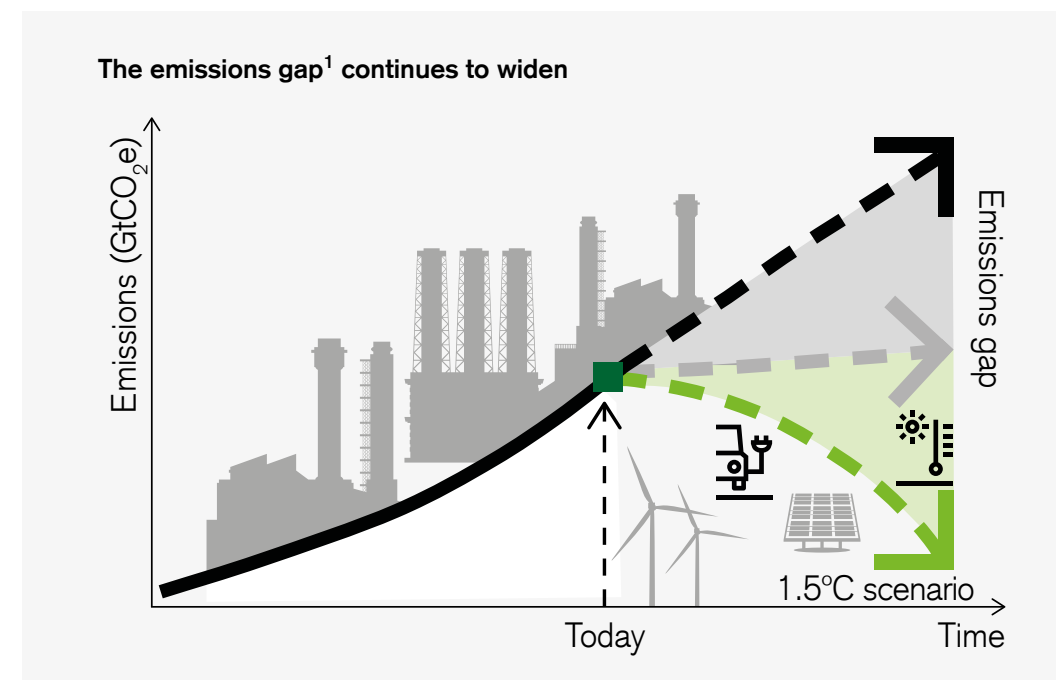
Invest in environmental innovations Credit Suisse (Lux) Environmental Impact Equity Fund



Powering positive environmental change

Human ingenuity knows no limits. New and exciting solutions that tackle the most pressing environmental challenges are emerging every day. Some of the companies delivering those solutions offer much more than mere sustainability policies: their products, services, and technologies aim to make a positive impact on the environment.

The Credit Suisse (Lux) Environmental Impact Fund provides clients with the opportunity to invest in pure-play companies that develop or finance solutions to the most pressing environmental and climate issues.



Sources Credit Suisse, United Nations Environment Programme (UNEP).
"Emissions Gap Report 2021"; unep.org/resources/emissions-gap-report-2021

Why environmental impact?

In recent years, investors and society have come to realize the need to place sustainability at the core of economic and societal development. This long-term trend opens up new opportunities for technologies addressing the most pressing environmental issues.

From smart buildings and advanced insulation, which increase energy efficiency, to electric vehicles, which help decarbonize the transportation sector, technologies needed to enable sustainability are already transforming the value chain of entire industries. In many areas, e.g. electric vehicles, we are approaching cost parity.

Today, technologies addressing sustainability challenges – such as home energy storage solutions or electric vehicles – are being adopted more and more widely, displacing incumbent solutions. We expect this trend to continue across numerous industries, laying the foundations for long-term growth.

Why now?

We are at a tipping point, and the time is ripe for change. The rate at which both the private and public sectors are allocating resources to initiatives promising a positive environmental impact is accelerating rapidly – by one estimate, the value of the market for solutions to combat climate change alone may reach USD 26 trillion between 2020 and 2030.² The need for solutions to challenges facing the planet is opening new markets and expanding existing ones, offering a range of profitable opportunities for active managers who successfully combine investment expertise with an impact and sustainability focus.

As a global financial services provider, we leverage expertise in sustainable investing, investment capabilities, insights, and resources to deliver investable solutions for our clients. Our **Credit Suisse (Lux) Environmental Impact Equity Fund** enables investors to steer capital toward companies whose products, services, and technologies have the potential to accelerate a positive environmental transition while aiming to generate financial returns.

¹ The difference between the emissions levels that countries have pledged to achieve under international agreements and the levels consistent with limiting global warming to well below 2°C.

² World Economic Forum. 2018. Fighting climate change could add USD 26 trillion to the global economy by 2030.

“
The transition from fossil fuels to clean technologies will transform the global economy in the 21st century in a more profound way than imagined today.

Holger Frey
Senior portfolio manager

How do we invest?

The mission statement of the Credit Suisse (Lux) Environmental Impact Equity Fund is to “invest in environmental innovations”, therefore executing on that promise while seeking attractive returns is our highest priority.

To efficiently address a wide range of environmental challenges, we have classified them into four subthemes aligned with specific United Nations Sustainable Development Goals (UN SDGs): sustainable infrastructure, resources, waste mitigation, and carbon reduction technologies.

Given our unique approach, focusing on compa-

nies that provide specific solutions to environmental challenges, the portfolio is biased toward small- and mid-cap enterprises. Since firms of this size are not often found in conventional portfolios, this enables us to tap into sources of return that have not previously been accessed, thus broadening diversification.

The fund incorporates ESG³ criteria in its investment process. Active ownership – i.e. proxy voting and engagement – helps us advance our goals in the interests of our investors while also supporting the industry in its endeavors to contribute to a more sustainable world economy.

Our investment subthemes are aligned with specific UN SDGs



³ ESG stands for environmental (E), social (S), and governance (G). More information about sustainable investing is available at credit-suisse.com/am/esg. For further information about our Sustainable Investing Policy, please visit credit-suisse.com/esg.

Our investment process

Global equity universe
~ 40,000
listed companies worldwide

ESG-screened and liquid⁴ universe
~ 25,000
stocks

Broad universe
~ 500
stocks with significant revenue exposure to the theme

Pure-play universe
~ 250
pure-play stocks

Portfolio construction
~ 40-60
stocks

Stock selection is based on five steps:

1

We analyze the global listed equity market in search of companies that have an appropriate strategy and a suitable product portfolio to enable them to drive positive environmental change.

2

We apply minimum liquidity requirements and exclude companies based on norms, values, and severe controversies to ensure alignment with our Sustainable Investment Framework.

3

After a careful analysis, supported by internal and external research, discussions with analysts, and regular company visits, the broad universe of around 500 stocks is quantitatively and qualitatively screened.

4

When defining the investable universe of around 250 stocks, we apply the pure-play criterion that at least 50% of the companies' revenues should be related to the environmental impact theme.

5

A concentrated, high-conviction portfolio of typically 40 to 60 stocks is built, based on a bottom-up approach driven by fundamental research. Material ESG factors are identified and incorporated into security analysis and are periodically monitored and reviewed.

⁴ Excluding stocks with a market capitalization below USD 150 mn (source: Bloomberg).

Fund details



Sustainable Thematic



ENVIRONMENT

LUXFLAG Label

The Credit Suisse (Lux) Environmental Impact Equity Fund invests in pure-play companies that offer environmental innovations addressing the most pressing environmental and climate issues. The investable universe is broken down into four subthemes: sustainable infrastructure, resources, waste mitigation, and carbon reduction technologies.



Key facts

Fund domicile	Luxembourg	Benchmark	MSCI World ESG Leaders (NR) ⁵
Fund management	Credit Suisse Fund Management S.A.	Inception date	25.06.2020
Portfolio manager	Holger Frey	Subscriptions/redemptions	Daily, with cut-off at 15:00 CET
Fund currency	USD	Sales charge	Max. 5.00%
Currency-hedged share classes	EUR, CHF		

Share class	Valor no.	ISIN	Effective management fee p.a. ⁶	Performance fee p.a. ⁷	Minimum investment	Distribution
USD B	54799903	LU2176897911	1.60%	–	None	Accumulating
USD IBP	54830003	LU2176899024	0.60%	15.00%	USD 500,000	Accumulating
USD UBP	54830167	LU2176899537	0.70%	15.00%	None	Accumulating
USD EBP ⁸	54830269	LU2176898646	0.60%	15.00%	None	Accumulating
EUR BH	54799925	LU2176898133	1.60%	–	None	Accumulating
EUR IBHP	54829997	LU2176898992	0.60%	15.00%	EUR 500,000	Accumulating
EUR UBHP	54830160	LU2176899453	0.70%	15.00%	None	Accumulating
EUR EBHP ⁸	54830267	LU2176898562	0.60%	15.00%	None	Accumulating
CHF BH	54799921	LU2176898059	1.60%	–	None	Accumulating
CHF IBHP	54830271	LU2176898729	0.60%	15.00%	CHF 500,000	Accumulating
CHF UBHP	54830012	LU2176899370	0.70%	15.00%	None	Accumulating
CHF EBHP ⁸	54830264	LU2176898489	0.60%	15.00%	None	Accumulating

⁵ While this index is officially designated as the fund's benchmark, it is not applied as such during the investment process and the fund portfolio need not bear any resemblance to it.

⁶ Management fee as of 31.12.2021. The fee may change at any time without prior notice to investors. For the maximum management fee, please refer to the fund's prospectus.

⁷ Charged on outperformance relative to the benchmark. High-water mark.

⁸ For qualified investors only.

For more information about the methodologies, please visit luxflag.org, and asianprivatebanker.com

The fund undertakes investments that are dedicated to addressing the United Nations Sustainable Development Goals (e.g. education or clean energy) through a thematic approach.

Information about the product's investment objectives, risks, charges, and expenses, as well as more complete information about the product, is provided in the prospectus (or relevant offering document), which should be read carefully before investing.

Risks

- Investors may lose part or all of their investment in this product.
- Political developments concerning environmental regulations may have a significant impact on the underlying investable universe.
- Exposure to small- and mid-cap companies may result in elevated short-term volatility and may carry liquidity risk.
- An elevated concentration on specific sectors or industry dynamics may fall out of investor favor at certain points in time.
- Heightened exposure to less-regulated sectors and to businesses such as renewable resources that are not yet well established could cause temporary volatility and may carry liquidity risk.
- It is possible that the data supplied by the ESG data providers may be incorrect, unavailable, or not very recently updated, so there may be a data time lag.

“
You cannot get through a single day without having an impact on the world around you.”

Jane Goodall

Source Eco-Age (2019). Dr. Jane Goodall's Best Quotes. The Eco-Living Archive. February 23, 2019. Retrieved from Dr. Jane Goodall's Best Quotes - Eco-Age



credit-suisse.com/thematicequities
credit-suisse.com/assetmanagement

For more information, please contact your relationship manager.

CREDIT SUISSE ASSET MANAGEMENT (Switzerland) Ltd.
CREDIT SUISSE AG, CREDIT SUISSE (Switzerland) Ltd.

Switzerland, ADGM, Argentina, Austria, Bahamas, Bahrain, Belgium, Bolivia, Brazil, Czech Republic, Chile, Colombia, Costa Rica, Cyprus, Denmark, DIFC, Dominican Republic, Ecuador, Egypt, Finland, France, Ghana, Greece, Honduras, Hungary, Israel, Italy, Jordan, Kazakhstan, Kenya, Kuwait, Lebanon, Liechtenstein, Luxembourg, Mexico, Monaco, Netherlands, Nicaragua, Nigeria, Norway, Oman, Qatar, Pakistan, Panama, Paraguay, Peru, Poland, Romania, Russia, Saudi Arabia, Slovak Republic, Spain, Sweden, Tanzania, Turkey, UAE, Ukraine, Uruguay, Venezuela.

Source: Credit Suisse, unless otherwise specified.

Unless noted otherwise, all illustrations in this document were produced by Credit Suisse Group AG and/or its affiliates with the greatest of care and to the best of its knowledge and belief.

This material constitutes marketing material of Credit Suisse Group AG and/or its affiliates (hereafter "CS"). This material does not constitute or form part of an offer or invitation to issue or sell, or of a solicitation of an offer to subscribe or buy, any securities or other financial instruments, or enter into any other financial transaction, nor does it constitute an inducement or incitement to participate in any product, offering or investment. Nothing in this material constitutes investment research or investment advice and may not be relied upon. It is not tailored to your individual circumstances, or otherwise constitutes a personal recommendation. The information and views expressed herein are those of CS at the time of writing and are subject to change at any time without notice. They are derived from sources believed to be reliable. Insofar as data, documents, and other information provided by you were used in the preparation of this presentation, we have merely checked them for plausibility and, in the event of any obvious inconsistencies, have given you appropriate notice. CS provides no guarantee with regard to the content and completeness of the information and where legally possible does not accept any liability for losses that might arise from making use of the information. If nothing is indicated to the contrary, all figures are unaudited. The information provided herein is for the exclusive use of the recipient. The information provided in this material may change after the date of this material without notice and CS has no obligation to update the information. This material may contain information that is licensed and/or protected under intellectual property rights of the licensors and property right holders. Nothing in this material shall be construed to impose any liability on the licensors or property right holders. Unauthorised copying of the information of the licensors or property right holders is strictly prohibited. The full offering documentation including, the prospectus or offering memorandum, the key investor information document (KIID), the basic information document (Basisinformationsblatt) for Swiss products, the fund rules, as well as the annual and bi-annual reports ("Full offering documentation"), as the case may be, may be obtained free of charge from the legal entity/entities indicated below. Information on your local distributors, representatives, information agent, paying agent, if any, and your local contacts in respect of the investment product(s) can be found below. The only legally binding terms of any investment product described in this material, including risk considerations, objectives, charges and expenses are set forth in the prospectus, offering memorandum, subscription documents, fund contract and/or any other fund governing documents. Some of the product(s) included in this material may not be registered and/or available for purchase in your country of domicile. If in doubt whether the product(s) is/are registered for distribution in your country, please consult your relationship manager or locally registered distributor. If investment products have not been registered with, or authorized by a supervisory authority, certain investor protections provided under supervisory laws and regulations may not be provided. As the investment product(s) has/have not been registered with, or authorized by a supervisory authority, certain investor protections provided under supervisory laws and regulations may not be provided. This material may not be forwarded or distributed to any other person and may not be reproduced. Any forwarding, distribution or reproduction is unauthorized and may result in a violation of the U.S. Securities Act of 1933, as amended (the "Securities Act"). The securities referred to herein have not been, and will not be, registered under the Securities Act, or the securities laws of any states of the United States and, subject to certain exceptions, the securities may not be offered, pledged, sold or otherwise transferred within the United States or to, or for the benefit or account of, U.S. persons. For a full description of the features of the products mentioned in this presentation as well as a full description of the opportunities, risks, and costs associated with the respective products, please refer to the relevant underlying securities prospectuses, sales prospectuses, or other additional product documents, which we will be pleased to provide to you at any time upon request. In addition, there may be conflicts of interest with regard to the investment. In connection with the provision of services, Credit Suisse AG and/or its affiliates may pay third parties or receive from third parties, as part of their fee or otherwise, a one-time or recurring fee (e.g. issuing commissions, placement commissions or trailer fees). Prospective investors should independently and carefully assess (with their tax, legal and financial advisers) the specific risks described in available materials, and applicable legal, regulatory, credit, tax and accounting consequences prior to making any investment decision.

Additional country-specific information:

DIFC: This presentation can only be offered to Professional Clients. This material is personal to each offeree and may only be used by those persons to whom it has been handed out.

Russia: This document is provided to you for information purposes only and in Russia it shall be exclusively used by recipients, who are Qualified Investors as defined by the applicable Russian legislation.

Настоящий документ предоставлен Вам исключительно для информационных целей и предназначен на территории России исключительно для пользования квалифицированными инвесторами, признанными таковыми в силу или в порядке, определенном применимым российским законодательством.

Uruguay: The instruments of this fund correspond to a fund that was not established under the system provided by Uruguayan Law 16,774 of September 27, 1996 and is not registered before the Uruguayan Central Bank.

Copyright © 2022 CREDIT SUISSE GROUP AG and/or its affiliates. All rights reserved.

Representative: Credit Suisse Funds AG¹, Uetlibergstrasse 231, CH-8070 Zurich | Paying Agent, Distributor: Credit Suisse (Switzerland) Ltd., Paradeplatz 8, CH-8001 Zurich | Distributor: Credit Suisse AG, Paradeplatz 8, CH-8001 Zurich | Distributor: Credit Suisse Asset Management (Switzerland) Ltd., Kalandergrasse 4, CH-8045 Zurich | Language versions available: English, German, French, Italian and/or Spanish | Supervisor (Entity of Registration): Swiss Financial Market Supervisory Authority (FINMA)

¹ Legal entity, from which the full offering documentation, the key investor information document (KIID), the fund rules, as well as the annual and bi-annual reports, if any, may be obtained free of charge.