

Focusing on key success factors of PropTechs

Swiss PropTech Report 2021 | June 2021



Swiss PropTech Report 2021
Stress test passed

From the 2021 survey
Portrait of three PropTechs

Imprint

Publisher: Credit Suisse AG, Investment Solutions & Products

Nannette Hechler-Fayd'herbe
Head of Global Economics & Research
+41 44 333 17 06
nannette.hechler-fayd'herbe@credit-suisse.com

Fredy Hasenmaile
Head Real Estate Economics
+41 44 333 89 17
fredy.hasenmaile@credit-suisse.com

Editorial deadline

15 June 2021

Publication series

Swiss Issues Immobilien

Visit our website:

www.credit-suisse.com/realestatestudy

Copyright

The publication may be quoted provided the source is identified.
Copyright © 2021 Credit Suisse Group AG and/or
affiliated companies. All rights reserved.

Authors

Fredy Hasenmaile, +41 44 333 89 17, fredy.hasenmaile@credit-suisse.com

Contributions

Roman Bolliger, Swiss Circle
Thomas Rieder, Credit Suisse
Lars Sommerer, SwissPropTech

We would like to thank Jiljana Heussi and Michael Wicki for developing the fundamentals of success factors as part of their MAS Master's thesis "Erfolgsfaktoren von PropTech-Unternehmen".

Dear readers,

If we are looking for positives from the pandemic, then the acceleration of the digital transformation in the real estate sector is certainly one of them.

To deal with this profound change, we need PropTech companies. Without their technical skills, innovative spirit and drive, such endeavors would hardly be possible. We are pleased to see how the PropTech sector is developing from year to year. The coronavirus crisis has brought some additional challenges to the sector, but has not been able to slow it down in any way.

With this fourth issue of the Swiss PropTech Report, we hope once again to improve the understanding of the PropTech sector, because it is the many different cooperations between PropTechs and the real estate sector that are really moving the real estate industry forward. But we also want to give the PropTech sector the visibility it deserves.

What distinguishes the successful PropTechs from the less successful ones? Luck? Yes, certainly. But what else? We explore this question in depth in this issue of the Swiss PropTech Report. A question that is not only highly relevant for the investors, partners and customers of the PropTechs, but also for the PropTechs themselves.

We hope you enjoy reading this study.



Raymond Rüttimann
Head Global Real Estate
Credit Suisse Asset Management



Gerald Kremer
Chief Digital Officer Global Real Estate
Credit Suisse Asset Management

Contents

Editorial	3
Swiss PropTech Report 2021	5
Swiss PropTech Survey 2021: Three PropTech Portraits	11
Other publications from Credit Suisse	15

Stress test passed

2020 was a challenging year for PropTech companies. However, the sector has come through the challenge, has grown strongly in the past year and should ultimately reap significant benefits from the real estate sector's shift towards digital solutions. Nevertheless, not all PropTechs will manage to hold their own in the market. We shall therefore look at the success factors of PropTechs, which are not only of interest to the individual players, but also to their investors, employees and customers.

First test for PropTechs

Last year, the PropTech sector – like other sectors – was overtaken by the coronavirus crisis and some questions were raised. However, unlike other sectors, COVID-19 was the first test for the young PropTech sector. Many real estate companies were severely challenged by the pandemic and put innovation projects on hold. Accordingly, many PropTechs had to fight hard to continue their projects. In addition, investors' willingness to take risks fell sharply. With this year's PropTech survey, we want to clarify, amongst other things, how well the PropTechs have emerged from the pandemic and where COVID-19 may have left its mark.

PropTech Survey 2021

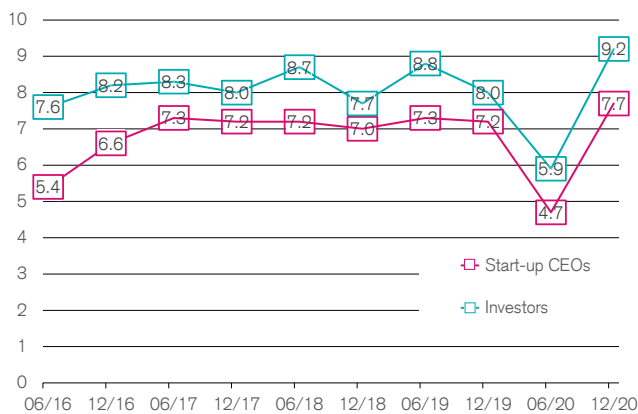
The online survey was sent in May 2021 to 284 PropTechs with business activities in Switzerland. Sixty-two PropTechs from all PropTech categories took part in the survey, which corresponds to a response rate of 22%. Depending on the structure of the survey participants, the results of our survey may diverge from year to year, as the samples are not identical. Nevertheless, the results give valuable information on trends, which is why we sometimes compare current values with previous surveys.

COVID-19 caused a short-term collapse in confidence

Temporarily, the sector held its breath around the world: The global PropTech Confidence Index, compiled by venture capital firm MetaProp, plummeted in the middle of last year, both in the estimation of PropTech CEOs and in the eyes of investors (Fig. 1). However, the consternation was short-lived. The confidence index recovered very quickly and by the end of 2020 had risen to a level never seen since measurements began. COVID-19 should ultimately prove to be a blessing rather than a curse for the sector. This is because the coronavirus crisis not only significantly accelerated the digital transformation in the real estate sector, but also clearly demonstrated the benefits of digitalization for the wider public. While companies that had already gone digital were able to continue many operations during the lockdown, latecomers often found themselves hampered. That is why many real estate companies have significantly changed their attitude towards digital technologies and set a new course accordingly. As a result of COVID-19, digital connectivity is now perceived in many places as a "must have" rather than a "nice to have".

Fig. 1: Global PropTech sentiment better than ever

Global PropTech Confidence Index; values above 5 signal confidence

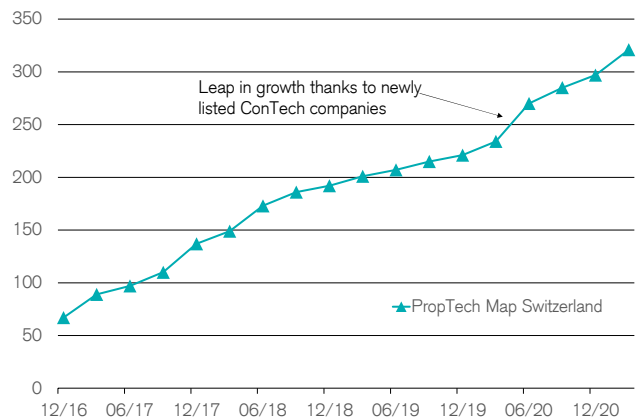


Source: MetaProp, Credit Suisse

Last data point: 12/2020

Fig. 2: PropTech sector continues to grow unfazed

Number of PropTechs according to the PropTech Map Switzerland



Source: proptechnews.ch, Credit Suisse

Last data point: 03/2021

Setback in investment volumes in 2020

The temporarily depressed mood was also reflected last year in the volume of venture capital invested globally in PropTech start-ups: According to the Center for Real Estate Technology & Innovation (CRETI), it fell to USD 23.8 billion, a decline of 24.7%. Investments tended to focus more on larger deals and later entry points. This was to be expected due to the uncertainty and the resulting slightly reduced risk appetite, and ultimately also roughly corresponds to the global decline in investment activity¹ in the real estate sector.

Otherwise little trace of COVID-19

The coronavirus crisis left far fewer traces on other indicators. The number of PropTechs operating in Switzerland, for example, continues to grow strongly, albeit not quite as rapidly as it did until around mid-2018 (Fig. 2). PropTech Map Switzerland, compiled by Heinz M. Schwyter, now counts over 320 entries. This means that Switzerland has an exceptionally high density of PropTechs by international standards. Germany, a much larger country, counted only slightly more companies at the end of 2020² (330 PropTechs), although German PropTechs weigh significantly more on average.

Undimmed optimism

Few traces of the crisis can be found in the PropTechs' financials either. Despite the pandemic, almost 80% of the PropTechs further increased their headcount in the last twelve months, by an average of 71% (Fig. 3). 18% of the PropTechs surveyed saw no change, and only 3.3% reported a decline in the workforce. Although this decline was significant at 15% to 20% or 25% to 50%, it only affected a small minority. The pandemic did not affect optimism in the sector either: 87% expect further staff increases in the next twelve months, in some cases even more than doubling the workforce.

Strong revenue growth expected

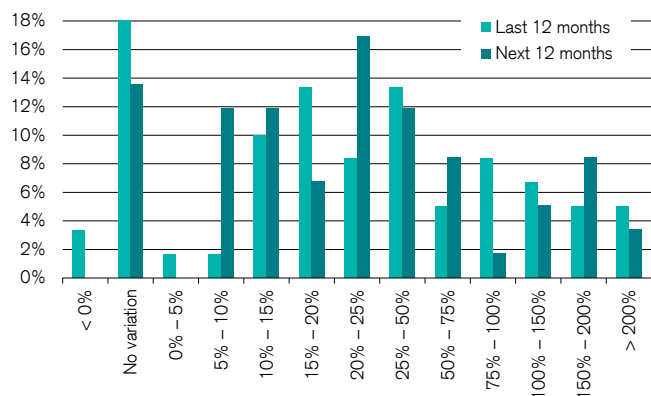
The setbacks in revenue figures are also clear. A small minority of PropTechs (9.6%) suffered a decline in revenue last year (Fig. 4). A further 11.5% recorded no growth or only slight growth of up to 5.0%. In contrast, just under 80% generated considerable growth of over 5.0% – even during the crisis. Overall, PropTechs achieved average revenue growth of 68% in 2020. This means that the Swiss PropTech sector, as well as the real estate industry as a whole, came through the crisis relatively unscathed. The PropTechs also expect a bright future. In 2021, 3.4% still expect a decline in revenue, but overall the sector aims to double its revenue figures. Higher revenue growth than in 2020 is also expected for 2022 and 2023. Other sectors can only dream of such figures.

Increased receptiveness for PropTech solutions

The real estate sector's interest in PropTech solutions rose following the outbreak of the coronavirus pandemic, and this trend has continued in the current year. Although around 18% of PropTechs find the real estate sector not very receptive or not at all receptive to pioneering technology solutions, the number of PropTechs that perceive the real estate sector as very receptive has nevertheless grown from 11% to 20%. PropTechs from the asset management, marketplace/platform and smart building/IoT sectors in particular expressed a high level of interest in their solutions.

Fig. 3: Employment trends at PropTechs

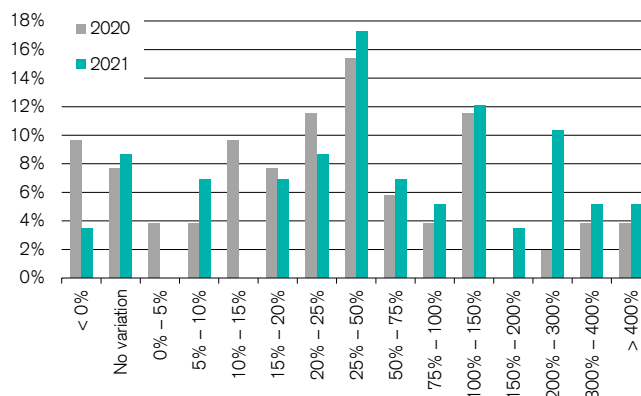
"How has the number of employees changed in the past 12 months, and how do you estimate it will change in the next 12 months?"



Source: Credit Suisse PropTech survey 2021 (N = 61 [last 12M], N = 60 [next 12M])

Fig. 4: Revenue growth at PropTechs

"How has annual revenue changed in 2020 compared to 2019, and what revenue growth do you expect in 2021?"



Source: Credit Suisse PropTech survey 2021 (revenue 2020, 2021: N = 61)

¹ JLL, Global real estate perspective, February 10, 2021

² www.gewerbe-quadrat.de

Success factors of PropTechs

What are the factors that define success?

As already stated, Switzerland has an exceptionally high density of PropTechs. Moreover, new PropTechs with similar or even identical business ideas are constantly entering the market. Not all of them will be able to position themselves successfully. This raises the question of what factors are key to the business success of PropTechs. An answer to this question is not only of interest to investors, who risk their equity capital, or customers, who provide time and money for strategically important projects, but also to the PropTechs themselves, who invest heart and soul and capital and are interested in making the right decisions. Profit is less of a yardstick for success than it is for established companies, since many PropTechs have not yet reached break-even. In many cases, they favor growth over the pursuit of profit, seeking to establish themselves as one of the leading players in their segment ahead of the competition and to secure market share.

Non-transparent PropTech sector

Authors Jiljana Heussi and Michael Wicki investigated the question of success factors as part of a Master's thesis³ commissioned by Credit Suisse. However, due to the lack of key company figures on the PropTech sector, this question cannot be answered empirically. Hardly any Swiss PropTechs are listed on the stock exchange, which would require them to give an account of their business activities. The authors therefore decided to conduct a qualitative survey among various experts. The experts were recruited from among the PropTechs themselves and their most important stakeholders – customers, investors and consultants. Starting from a long list of 15 success factors, compiled based on secondary research and findings from other industries, the authors identified the key factors for success. The surveys were limited to Switzerland – on the assumption that the global PropTech sector is not significantly different to PropTech companies in Switzerland in terms of success factors.

Success has many factors

The expert interviews firstly confirmed that the 15 factors obtained from the secondary research represented a very complete list. Only one additional factor was obtained from the interviews. Secondly, the survey confirmed the success of PropTech companies is not determined by a single factor, but rather by an interplay of all factors identified as significant. For PropTechs, this means that they should place a special focus on the most important factors, but without disregarding the others.

Top 3 success factors

The research conducted as part of the Master's thesis came to a fairly consistent conclusion regarding the top three success factors. We refer to these as first order success factors. These are customer benefit, a strong team and scalability. These three factors were mentioned by all four stakeholder groups in the qualitative, open-ended survey of PropTechs, investors, customers and consultants (Fig. 5). In the quantitative survey, where the experts had to weight the 15 factors from the secondary research with points, these three factors were also top-rated (Fig. 6).

Fig. 5: Success factors from qualitative survey

Open-ended survey of PropTechs (9), customers (5), investors (2) and consultants (2)

Success factor	Derivation	Named by			
		PropTech	Customers	Investors	Consultants
Customer benefit	deductive	x	x	x	x
Financing	deductive	x	x	x	
Timing	deductive	x	x		
Scalability	deductive	x	x	x	x
Team	deductive	x	x	x	x
Network	deductive	x	x		
Unique selling point	deductive	x	x		x
Business model	deductive	x	x	x	
Customer orientation	inductive	x	x		x

Source: Heussi, J., Wicki, M. (2020): Erfolgsfaktoren von PropTech-Unternehmen

Customer benefit as a success factor

Customer benefit can be seen as a sine qua non to the success of a PropTech and therefore rightly stands at the top of the ranking of success factors. If a PropTech is not able to generate real added value for its customers with its products or services, it will probably be unable to successfully position itself in the market – no matter how well it does on the other success factors.

³ Heussi, J., Wicki, M. (2020). Erfolgsfaktoren von PropTech-Unternehmen.

Fig. 6: Success factors from quantitative survey

Quantitative assessment of the 15 most important factors for the success of PropTechs, from the secondary literature, by the different stakeholder groups.

	PropTechs		Investors		Customers		Consultants		Total	
	Points	in %	Points	in %	Points	in %	Points	in %	Points	in %
Customer benefit	30	22%	6	20%	16	21%	8	27%	60	22%
Team	23	17%	8	27%	5	7%	1	3%	37	14%
Scalability	13	10%	4	13%	8	11%	4	13%	29	11%
Financing	14	10%	7	23%	5	7%	0	0%	26	10%
Unique selling point*	8	6%	2	7%	6.5	9%	5	17%	21.5	8%
Network	10	7%	3	10%	3	4%	0	0%	16	6%
Business model	7	5%	0	0%	6	8%	2	7%	15	6%
Familiarity/Visibility	8	6%	0	0%	2.5	3%	3	10%	13.5	5%
Integration opportunity	2	1%	0	0%	7	9%	4	13%	13	5%
Sector knowledge	10	7%	0	0%	2	3%	0	0%	12	4%
Platform independence	3	2%	0	0%	5	7%	2	7%	10	4%
Security	4	3%	0	0%	6	8%	0	0%	10	4%
Timing	3	2%	0	0%	3	4%	1	3%	7	3%
Industry dependency	0	0%	0	0%	0	0%	0	0%	0	0%

*Due to proximity in content, we combined the factor imitability and unique selling point.

Source: Heussi, J., Wicki, M. (2020): Erfolgsfaktoren von PropTech-Unternehmen

Core team as a success factor

Managing a PropTech places very high demands on the management team. Due to strong growth, not only do new customers have to be constantly satisfied, but the structures of the PropTech company also have to be constantly adapted to new requirements. This only works with a strong (core) team. One of the most important, but also most difficult tasks of the founder(s) of a PropTech is therefore to build a core team of competent individuals as the company grows and to retain them with the right incentives. This in turn means that the founders also need to learn to let other members of the core team take part in decisions.

Scalability as a success factor

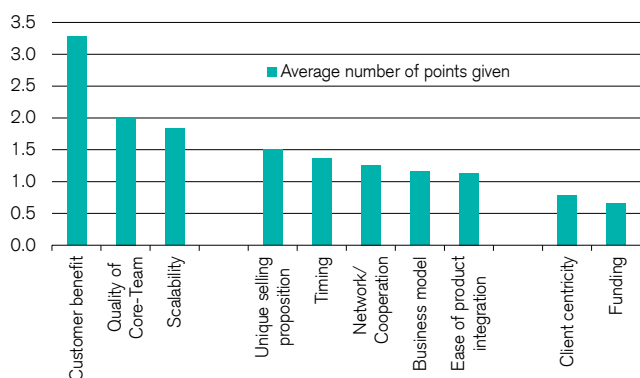
Scalability is key to the scale of a PropTech's success. Certain business ideas may allow a PropTech to hold its own in the market, but offer it little prospect of ever becoming a large technology company. Low scalability may be due to the fact that the PropTech's innovation can either be copied relatively easily or that each additional customer requires a relatively large amount of effort. The resulting limited earnings potential is particularly problematic for investors. For PropTech1, a European venture capital investor, lack of scalability is the second most frequent reason for rejecting an investment (26%), right after the most important reason – insufficient product maturity. For venture capitalists, a PropTech must have a scalability potential of about a factor of 10 in the company value for an investment to be considered. This is against the background of the risks taken and the awareness that out of ten investments, only a few will recoup the money invested.

Second order success factors

With the PropTech Survey 2021, we tested the top three success factors using a larger sample. In order not to overload the survey, we only offered ten factors for selection (the eight most important in Fig. 6, supplemented by the factors customer focus and timing). Survey participants also mentioned the factors simplicity, agility and maturity of the relevant market, but only once each. The top 3 factors and their order were confirmed in the survey (Fig. 7). There thus seems to be a relatively large consensus regarding the most important success factors. The second order success factors are grouped behind them. These include the factors unique selling point, timing, network/cooperation, business model and simplicity of product integration. Four of these five factors already featured in the midfield of the key factors mentioned in the Heussi/Wicki Master's thesis. Only timing was rated less highly in the Master's thesis. In the PropTech survey, on the other hand, funding is only in tenth place, while in the Master's thesis it was listed directly behind the top three factors. The additional factor of customer focus, which was derived from the qualitative survey in the Master's thesis, is positioned higher than funding. However, it did not make it into the midfield of the success factors. Accordingly, there is also widespread agreement regarding the factors in the midfield, if not total agreement.

Fig. 7: Success factors of PropTechs

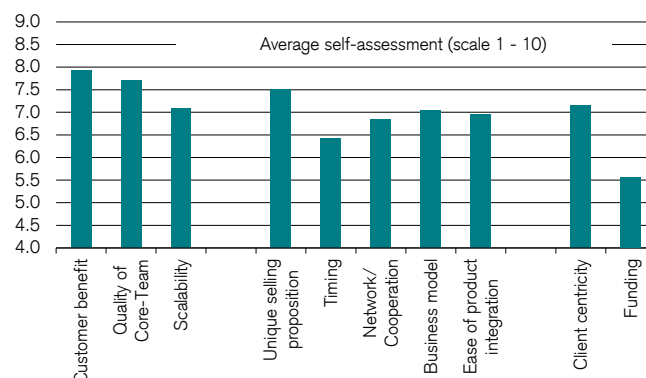
"What are in your opinion the general success factors for PropTechs? Allocate 15 points to your favorites"



Source: Credit Suisse PropTech survey 2021 (N = 61)

Fig. 8: Self-perception in relation to success factors

"How do you rate your PropTech in relation to these success factors on a scale from 1 (very weak) to 10 (very strong)?"



Source: Credit Suisse PropTech survey 2021 (N = 62)

PropTechs' self-perception in relation to the success factors

We also asked the PropTechs to rate their own PropTech in relation to these success factors on a scale of 1 (very weak) to 10 (very strong). The ratings were relatively homogeneous (Fig. 8). On average, the PropTechs see themselves best positioned in terms of customer benefit (7.9 points out of a maximum of 10), quality of the core team (7.7) and uniqueness (i.e. low imitability of their own solution) (7.5). They also give themselves a good rating in terms of customer focus (7.2). Of the top three factors, scalability is rated as most critical at 7.1 points. PropTechs see themselves as least well positioned in terms of timing (6.4) and fundraising (5.6), although one is arguably linked to the other. The PropTechs know that they do not have infinite time to establish themselves in the market.

High willingness to cooperate

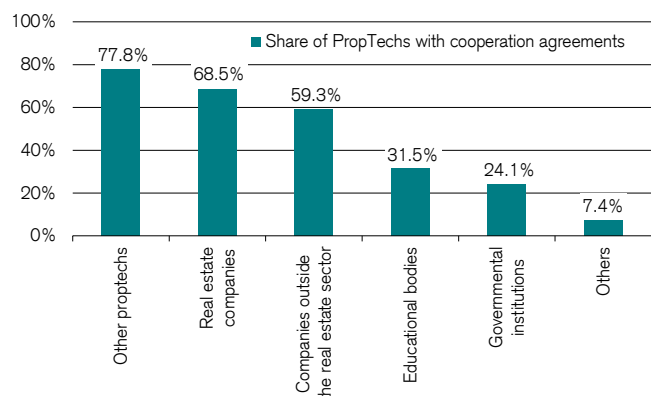
Cooperation is a high priority in the PropTech sector. In the survey, this factor was placed solidly in the midfield. Over 88% of the PropTechs in Switzerland maintain cooperation with other partners. In Germany, only 72% of the PropTechs confirmed this. Horizontal cooperation with other PropTechs is most common in this country, closely followed by vertical cooperation between PropTechs and real estate companies (Fig. 9). The high willingness to cooperate in the PropTech sector clearly contrasts with the situation in other real estate and construction industries (e.g. general and sole contractors), where a much more pronounced competitive relationship prevails. This is probably due to the high degree of saturation of such mature markets. The market for digital solutions, however, is a distinct growth market, and cooperations are an effective means of growing faster in the market. Many PropTechs have recognized this. The high proportion of cooperations with companies outside the real estate sector also demonstrates that they do not see their sphere of influence as limited to the real estate sector.

Cooperations are sales-driven

Cooperations with PropTechs are rated as especially important for the broadening of customer groups or the network (Fig. 10). The formation of an ecosystem of different complementary offerings is also identified as an important driver. Cooperation is therefore primarily a means of boosting sales. Synergy effects, such as cost savings or the transfer of know-how, on the other hand, are considered less important. In terms of type of cooperation, technical cooperation (e.g. bundling products via API) dominates over embedding in an ecosystem or in a value chain. Sales and marketing cooperation is less important, and the sharing of personnel or data is insignificant.

Fig. 9: Frequency of cooperation

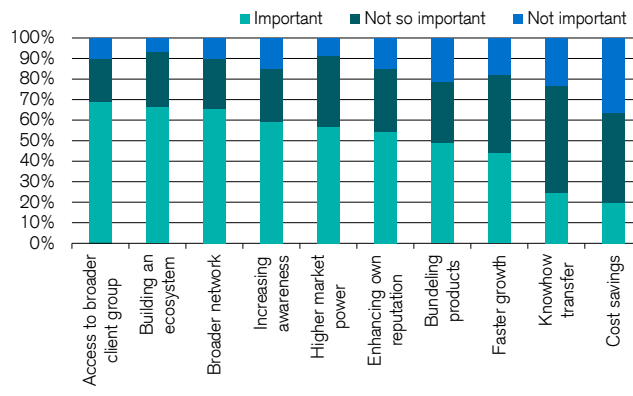
"Who does your PropTech cooperate with?"



Source: Credit Suisse PropTech survey 2021 (N = 61)

Fig. 10: Drivers for cooperations with PropTechs

"What are the drivers for cooperations with other PropTechs?"



Source: Credit Suisse PropTech survey 2021 (N = 61)

Trend towards product bundling and ecosystems

Two developments are currently shaping cooperations. Firstly, the high growth of PropTechs and their solutions has led to confusing situations. Meanwhile, traditional real estate companies want to integrate digital solutions in a network – not in the form of incompatible individual solutions. The demand for bundling and embedding in overall systems has therefore grown strongly. The high willingness to cooperate within the PropTech sector is therefore probably also a response to this customer demand for offers from a single source. It also reflects PropTechs' willingness to cover a larger part of the value chain for the benefit of their customers, either alone or with partners. It has been shown that cooperation among PropTechs as well as platforms with several combined new ideas and innovations result in the best solutions. Secondly, there is a more noticeable trend towards the formation of ecosystems around PropTech's own core business. The drivers of this development are the network effects that can be achieved as a result. The insurance industry in particular is very active in this regard in Switzerland and is trying to establish PropTech ecosystems.

Contradictory importance of financing

The feedback regarding the importance of financing is somewhat contradictory. In the Master's thesis, this factor was emphasized in particular by investors and ranked third by the PropTechs surveyed there. In our survey this year, however, it was the least important factor. Irrespective of this, we note that established real estate companies are increasingly coming into play as financiers or as strategic partners. Their share of PropTechs' financing sources has now risen to 18.5% (Fig. 11). In addition to growing maturity and consequently higher financing from their own business activities, this is likely to be the most important reason for the declining level of self-financing among local PropTechs. In the 2019 and 2020 surveys, 76% and 74% of financing still came from PropTechs' founders and partners, respectively. This share has dropped to 61.7% in this year's survey. However, the growing share of strategic investors can also be a double-edged sword for PropTechs, as strategic investors from the real estate industry do not necessarily pursue

congruent goals. Cooperation or customer relationships with their competitors could be made more difficult as a result.

Young PropTechs in particular seek capital

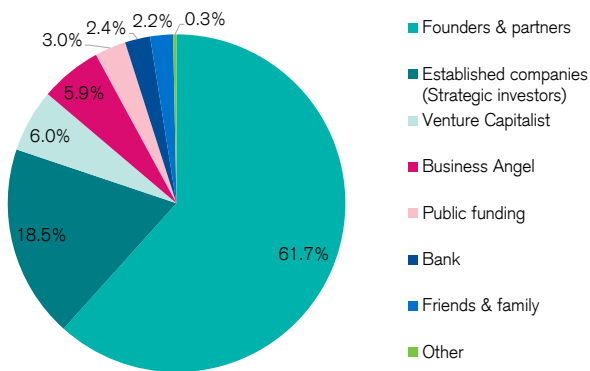
The question of financing does not arise with the same urgency for all PropTechs. 61% of survey participants reported no need for additional financing. In particular, more than three quarters of early-stage PropTechs (in start-up or validation phase) are looking for additional financing. Among established PropTechs or those on the way to becoming established (maturity phase), only some 20% to 25% are still seeking capital. Obviously, sufficient investors can be found for PropTechs that are advanced in their life cycle, or the relevant companies can already largely cover their financial needs from self-generated funds.

Hurdles in attracting investors

We also wanted to know what most frequently causes capital commitments to fail and what the biggest hurdles are in convincing investors. Generally speaking, several factors are responsible for the failure to obtain financing. Lack of product maturity has emerged as the main reason (Fig. 12). Almost 58% of the PropTechs described this point as either a major or medium-sized hurdle. In a similar vein, almost 55% identified a low number of reference projects as a major or medium-sized hurdle. Many financing operations also fail because founders and investors cannot agree on the valuation of the PropTech. Limited scalability of the business idea and a core team that is too small can also generate skepticism. The lack of a board of directors or advisory board, on the other hand, is less significant. Other hurdles mentioned were a customer base that is too small or shareholding ratios that are not clear enough.

Fig. 11: Sources of financing for PropTechs

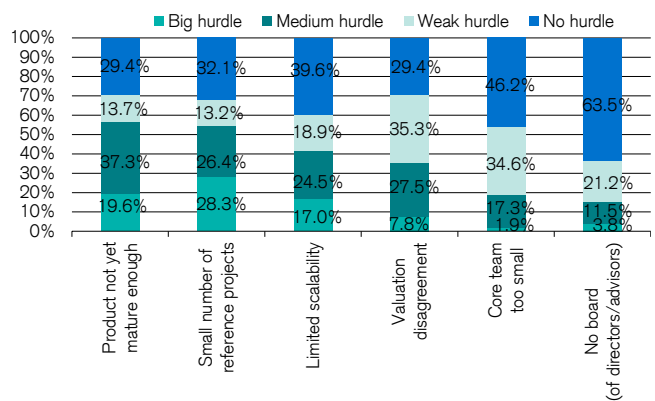
"How is your company financed?"



Source: Credit Suisse PropTech survey 2021 (N = 50)

Fig. 12: Largest financing hurdles

"What are the biggest hurdles in convincing investors?"



Source: Credit Suisse PropTech survey 2021 (N = 62)

Swiss PropTech Survey 2021: Three PropTech Portraits

Portrait of three participants in the Swiss PropTech Survey 2021

To illustrate the diverse and vibrant PropTech landscape, we give three randomly drawn participants in the PropTech survey the opportunity to introduce themselves.



E-nno Switzerland SA – Data driven solutions that increase energy efficiency and reduce real estate’s environmental footprint

At the interface between the IoT, data science and building energy, E-nno Switzerland SA is increasing the value of data generated by buildings in order to improve energy efficiency and reduce the environmental impact. Rewarded by Solar Impulse Efficient Solution Label, their technology enables to reduce energy consumption of the real estate from the 3rd month of use and capitalize on collected data to better prepare future renovation works. Data centralization vector, E-nno’s aim is to centralize the data and make it available to the various players in the property sector via their API. The optimization service is 100% financed by the energy savings and the return on investment is achieved in two years on average. With more than 250,000 m² of optimized space to date, the start-up achieves up to 30% energy savings and up to 40% reduction in CO₂ emissions from the first year thanks to its optimization algorithms.

 <https://www.e-nno.ch/>



HEGIAS

building imagination

Hegias – The automated and browser-based CMS solution for visualization and communication with VR for the construction and real estate industry

The world’s first automated and browser-based content management system (CMS) solution for visualizing and communicating with virtual reality (VR) for the construction and real industry industry. Thus, you can intuitively and without any prior knowledge load your planned construction project in 3D via the touch of a button and set it up any way you want with the simple drag-and-drop function. This allows you to view and experience your plans from every angle. It’s guaranteed to wow. With HEGIAS VR, builders and buyers can enter a building, look at various materials, furnish it using the drag-and-drop functionality and buy and build based on a dream that they’ve seen and touched – even though it doesn’t even exist yet.

 <https://hegias.com/>



lucy

lucy is the digital 3D-WEB-GIS platform for the transformation of our living space

With the simple tools of lucy, settlement developments and local planning can be represented interactively and comprehensively in the digital 3D twin. The basis for the 3D village model is the legally binding principles of the official cadastral survey. Planners, real estate developers and authorities can model their development scenarios directly on the lucy platform and share their ideas with citizens in a web-based manner - easily, at any time and without expert knowledge. An ideal basis for discussion for all those involved. This makes it possible to identify risks and opportunities of developments at an early stage, which significantly increases planning reliability. Companies from the private sector can offer their data and applications on lucy via open interfaces. In this way, lucy builds bridges between authorities and the private sector with great potential and value added for all parties involved.

 <https://www.lucy.ch/>

Important Information

This report represents the views of the Investment Strategy Department of CS and has not been prepared in accordance with the legal requirements designed to promote the independence of investment research. It is not a product of the Credit Suisse Research Department even if it references published research recommendations. CS has policies in place to manage conflicts of interest including policies relating to dealing ahead of the dissemination of investment research. These policies do not apply to the views of Investment Strategists contained in this report.

Risk Warning

Every investment involves risk, especially with regard to fluctuations in value and return. If an investment is denominated in a currency other than your base currency, changes in the rate of exchange may have an adverse effect on value, price or income.

This document may include information on investments that involve special risks. You should seek the advice of your independent financial advisor prior to taking any investment decisions based on this document or for any necessary explanation of its contents. Further information is also available in the information brochure "Risks Involved in Trading Financial Instruments" available from the Swiss Bankers Association.

Past performance is not an indicator of future performance. Performance can be affected by commissions, fees or other charges as well as exchange rate fluctuations.

Financial market risks

Historical returns and financial market scenarios are no reliable indicators of future performance. The price and value of investments mentioned and any income that might accrue could fall or rise or fluctuate. You should consult with such advisor(s) as you consider necessary to assist you in making these determinations.

Investments may have no public market or only a restricted secondary market. Where a secondary market exists, it is not possible to predict the price at which investments will trade in the market or whether such market will be liquid or illiquid.

Emerging markets

Where this document relates to emerging markets, you should be aware that there are uncertainties and risks associated with investments and transactions in various types of investments of, or related or linked to, issuers and obligors incorporated, based or principally engaged in business in emerging markets countries. Investments related to emerging markets countries may be considered speculative, and their prices will be much more volatile than those in the more developed countries of the world. Investments in emerging markets investments should be made only by sophisticated investors or experienced professionals who have independent knowledge of the relevant markets, are able to consider and weigh the various risks presented by such investments, and have the financial resources necessary to bear the substantial risk of loss of investment in such investments. It is your responsibility to manage the risks which arise as a result of investing in emerging markets investments and the allocation of assets in your portfolio. You should seek advice from your own advisers with regard to the various risks and factors to be considered when investing in an emerging markets investment.

Alternative investments

Hedge funds are not subject to the numerous investor protection regulations that apply to regulated authorized collective investments and hedge fund managers are largely unregulated. Hedge funds are not limited to any particular investment discipline or trading strategy, and seek to profit in all kinds of markets by using leverage, derivatives, and complex speculative investment strategies that may increase the risk of investment loss.

Commodity transactions carry a high degree of risk, including the loss of the entire investment, and may not be suitable for many private investors. The performance of such investments depends on unpredictable factors such as natural catastrophes, climate influences, hauling capacities, political unrest, seasonal fluctuations and strong influences of rolling-forward, particularly in futures and indices.

Investors in real estate are exposed to liquidity, foreign currency and other risks, including cyclical risk, rental and local market risk as well as environmental risk, and changes to the legal situation.

Private Equity

Private Equity (hereafter "PE") means private equity capital investment in companies that are not traded publicly (i.e. are not listed on a stock exchange), they are complex, usually illiquid and long-lasting. Investments in a PE fund

generally involve a significant degree of financial and/or business risk. Investments in PE funds are not principal-protected nor guaranteed. Investors will be required to meet capital calls of investments over an extended period of time. Failure to do so may traditionally result in the forfeiture of a portion or the entirety of the capital account, forego any future income or gains on investments made prior to such default and among other things, lose any rights to participate in future investments or forced to sell their investments at a very low price, much lower than secondary market valuations. Companies or funds may be highly leveraged and therefore may be more sensitive to adverse business and/or financial developments or economic factors. Such investments may face intense competition, changing business or economic conditions or other developments that may adversely affect their performance.

Interest rate and credit risks

The retention of value of a bond is dependent on the creditworthiness of the Issuer and/or Guarantor (as applicable), which may change over the term of the bond. In the event of default by the Issuer and/or Guarantor of the bond, the bond or any income derived from it is not guaranteed and you may get back none of, or less than, what was originally invested.

Investment Strategy Department

Investment Strategists are responsible for multi-asset class strategy formation and subsequent implementation in CS's discretionary and advisory businesses. If shown, Model Portfolios are provided for illustrative purposes only. Your asset allocation, portfolio weightings and performance may look significantly different based on your particular circumstances and risk tolerance. Opinions and views of Investment Strategists may be different from those expressed by other Departments at CS. Investment Strategist views may change at any time without notice and with no obligation to update. CS is under no obligation to ensure that such updates are brought to your attention.

From time to time, Investment Strategists may reference previously published Research articles, including recommendations and rating changes collated in the form of lists. The recommendations contained herein are extracts and/or references to previously published recommendations by Credit Suisse Research. For equities, this relates to the respective Company Note or Company Summary of the issuer. Recommendations for bonds can be found within the respective Research Alert (bonds) publication or Institutional Research Flash/Alert – Credit Update Switzerland. These items are available on request or from <https://investment.credit-suisse.com>. Disclosures are available from www.credit-suisse.com/disclosure.

Global disclaimer/Important Information

The information provided herein constitutes marketing material; it is not investment research.

This document is not directed to, or intended for distribution to or use by, any person or entity who is a citizen or resident of or located in any locality, state, country or other jurisdiction where such distribution, publication, availability or use would be contrary to law or regulation or which would subject CS to any registration or licensing requirement within such jurisdiction.

References in this document to CS include Credit Suisse AG, the Swiss bank, its subsidiaries and affiliates. For more information on our structure, please use the following link: <http://www.credit-suisse.com>

NO DISTRIBUTION, SOLICITATION, OR ADVICE: This document is provided for information and illustrative purposes and is intended for your use only. It is not a solicitation, offer or recommendation to buy or sell any security or other financial instrument. Any information including facts, opinions or quotations, may be condensed or summarized and is expressed as of the date of writing. The information contained in this document has been provided as a general market commentary only and does not constitute any form of regulated investment research financial advice, legal, tax or other regulated service. It does not take into account the financial objectives, situation or needs of any persons, which are necessary considerations before making any investment decision. You should seek the advice of your independent financial advisor prior to taking any investment decisions based on this document or for any necessary explanation of its contents. This document is intended only to provide observations and views of CS at the date of writing, regardless of the date on which you receive or access the information. Observations and views contained in this document may be different from those expressed by other Departments at CS and may change at any time without notice and with no obligation to update. CS is under no obligation to ensure that such updates are brought to your attention. **FORECASTS & ESTIMATES:** Past performance should not be taken as an indication or guarantee of future performance, and no representation or warranty, express or implied, is made regarding future performance. To the extent that this document contains statements about future performance, such statements are forward looking and subject to a number of risks and uncertainties. Unless indicated to the contrary, all figures are unaudited. All valuations mentioned herein are subject

to CS valuation policies and procedures. **CONFLICTS:** CS reserves the right to remedy any errors that may be present in this document. CS, its affiliates and/or their employees may have a position or holding, or other material interest or effect transactions in any securities mentioned or options thereon, or other investments related thereto and from time to time may add to or dispose of such investments. CS may be providing, or have provided within the previous 12 months, significant advice or investment services in relation to the investments listed in this document or a related investment to any company or issuer mentioned. Some investments referred to in this document will be offered by a single entity or an associate of CS or CS may be the only market maker in such investments. CS is involved in many businesses that relate to companies mentioned in this document. These businesses include specialized trading, risk arbitrage, market making, and other proprietary trading. **TAX:** Nothing in this document constitutes investment, legal, accounting or tax advice. CS does not advise on the tax consequences of investments and you are advised to contact an independent tax advisor. The levels and basis of taxation are dependent on individual circumstances and are subject to change. **SOURCES:** Information and opinions presented in this document have been obtained or derived from sources which in the opinion of CS are reliable, but CS makes no representation as to their accuracy or completeness. CS accepts no liability for a loss arising from the use of this document. **WEBSITES:** This document may provide the addresses of, or contain hyperlinks to, websites. Except to the extent to which the document refers to website material of CS, CS has not reviewed the linked site and takes no responsibility for the content contained therein. Such address or hyperlink (including addresses or hyperlinks to CS's own website material) is provided solely for your convenience and information and the content of the linked site does not in any way form part of this document. Accessing such website or following such link through this document or CS's website shall be at your own risk. **DATA PRIVACY:** Your Personal Data will be processed in accordance with the Credit Suisse privacy statement accessible at your domicile through the official Credit Suisse website <https://www.credit-suisse.com>. In order to provide you with marketing materials concerning our products and services, Credit Suisse Group AG and its subsidiaries may process your basic Personal Data (i.e. contact details such as name, e-mail address) until you notify us that you no longer wish to receive them. You can opt-out from receiving these materials at any time by informing your Relationship Manager.

Distributing entities

Except as otherwise specified herein, this report is distributed by Credit Suisse AG, a Swiss bank, authorized and regulated by the Swiss Financial Market Supervisory Authority.

Austria: This report is either distributed by CREDIT SUISSE (LUXEMBOURG) S.A. Zweigniederlassung Österreich (the "Austria branch") or by Credit Suisse (Deutschland) AG. The Austria branch is a branch of CREDIT SUISSE (LUXEMBOURG) S.A., a duly authorized credit institution in the Grand Duchy of Luxembourg with registered address 5, rue Jean Monnet, L-2180 Luxembourg. The Austria branch is subject to the prudential supervision of the Luxembourg supervisory authority, the Commission de Surveillance du Secteur Financier (CSSF), 283, route d'Arlon, L-1150 Luxembourg, Grand Duchy of Luxembourg, as well as of the Austrian supervisory authority, the Financial Market Authority (FMA), Otto-Wagner Platz 5, A-1090 Vienna, Austria. Credit Suisse (Deutschland) Aktiengesellschaft is supervised by the German supervisory authority Bundesanstalt für Finanzdienstleistungsaufsicht („BaFin“) in collaboration with the Austrian supervisory authority, the Financial Market Authority (FMA), Otto-Wagner Platz 5, A-1090 Vienna, Austria. **Bahrain:** This report is distributed by Credit Suisse AG, Bahrain Branch, a branch of Credit Suisse AG, Zurich/Switzerland, duly authorized and regulated by the Central Bank of Bahrain (CBB) as an Investment Business Firm Category 2. Related financial services or products are only made available to Accredited Investors, as defined by the CBB, and are not intended for any other persons. The Central Bank of Bahrain has not reviewed, nor has it approved, this document or the marketing of any investment vehicle referred to herein in the Kingdom of Bahrain and is not responsible for the performance of any such investment vehicle. Credit Suisse AG, Bahrain Branch is located at Level 21-22, East Tower, Bahrain World Trade Centre, Manama, Kingdom of Bahrain. **Chile:** This report is distributed by Credit Suisse Agencia de Valores (Chile) Limitada, a branch of Credit Suisse AG (incorporated in the Canton of Zurich), regulated by the Chilean Financial Market Commission. Neither the issuer nor the securities have been registered with the Financial Market Commission of Chile (Comisión para el Mercado Financiero) pursuant to Law no. 18.045, the Ley de Mercado de Valores, and regulations thereunder, so they may not be offered or sold publicly in Chile. This document does not constitute an offer of, or an invitation to subscribe for or purchase, the securities in the Republic of Chile, other than to individually identified investors pursuant to a private offering within the meaning of article 4 of the Ley de Mercado de Valores (an offer that is not "addressed to the public in general or to a certain sector or specific group of the public"). **DIFC:** This information is being distributed by Credit Suisse AG (DIFC Branch). Credit Suisse AG (DIFC Branch) is licensed and regulated by the Dubai Financial Services Authority ("DFSA"). Related financial services or products are only made available to Professional Clients or Market Counterparties, as defined by the DFSA, and are not intended for any other persons. Credit Suisse AG (DIFC Branch) is located on Level 9 East, The Gate Building, DIFC, Dubai, United Arab Emirates. **France:** This report is distributed by Credit Suisse (Luxembourg) S.A. Succursale en France

(the "France branch") which is a branch of Credit Suisse (Luxembourg) S.A., a duly authorized credit institution in the Grand Duchy of Luxembourg with registered address 5, rue Jean Monnet, L-2180 Luxembourg. The France branch is subject to the prudential supervision of the Luxembourg supervisory authority, the Commission de Surveillance du Secteur Financier (CSSF), and of the French supervisory authorities, the Autorité de Contrôle Prudentiel et de Résolution (ACPR) and the Autorité des Marchés Financiers (AMF). **Germany:** This report is distributed by Credit Suisse (Deutschland) Aktiengesellschaft regulated by the Bundesanstalt für Finanzdienstleistungsaufsicht („BaFin“). **Guernsey:** This report is distributed by Credit Suisse AG Guernsey Branch, a branch of Credit Suisse AG (incorporated in the Canton of Zurich), with its place of business at Helvetia Court, Les Echelons, South Esplanade, St Peter Port, Guernsey. Credit Suisse AG Guernsey Branch is wholly owned by Credit Suisse AG and is regulated by the Guernsey Financial Services Commission. Copies of the latest audited accounts of Credit Suisse AG are available on request. **India:** This report is distributed by Credit Suisse Securities (India) Private Limited (CIN no. U67120MH1996PTC104392) regulated by the Securities and Exchange Board of India as Research Analyst (registration no. INH 000001030), as Portfolio Manager (registration no. INP000002478) and as Stock Broker (registration no. INZ000248233), having registered address at 9th Floor, Ceejay House, Dr. Annie Besant Road, Worli, Mumbai – 400 018, India, T- +91-22 6777 3777. **Israel:** If distributed by Credit Suisse Financial Services (Israel) Ltd. in Israel: This document is distributed by Credit Suisse Financial Services (Israel) Ltd. Credit Suisse AG, including the services offered in Israel, is not supervised by the Supervisor of Banks at the Bank of Israel, but by the competent banking supervision authority in Switzerland. Credit Suisse Financial Services (Israel) Ltd. is a licensed investment marketer in Israel and thus, its investment marketing activities are supervised by the Israel Securities Authority. **Italy:** This report is distributed in Italy by Credit Suisse (Italy) S.p.A., a bank incorporated and registered under Italian law subject to the supervision and control of Banca d'Italia and CONSOB. **Lebanon:** This report is distributed by Credit Suisse (Lebanon) Finance SAL ("CSLF"), a financial institution incorporated in Lebanon and regulated by the Central Bank of Lebanon ("CBL") and having a financial institution license number 42. Credit Suisse (Lebanon) Finance SAL is subject to the CBL's laws and circulars as well as the laws and regulations of the Capital Markets Authority of Lebanon ("CMA"). CSLF is a subsidiary of Credit Suisse AG and part of the Credit Suisse Group (CS). The CMA does not accept any responsibility for the content of the information included in this report, including the accuracy or completeness of such information. The liability for the content of this report lies with the issuer, its directors and other persons, such as experts, whose opinions are included in the report with their consent. The CMA has also not assessed the suitability of the investment for any particular investor or type of investor. It is hereby expressly understood and acknowledged that investments in financial markets may involve a high degree of complexity and risk of loss in value and may not be suitable to all investors. The suitability assessment performed by CSLF with respect to this investment will be undertaken based on information that the investor would have provided to CSLF as at the date of such assessment and in accordance with Credit Suisse internal policies and processes. It is understood that the English language will be used in all communication and documentation provided by CS and/or CSLF. By accepting to invest in the product, the investor expressly and irrevocably confirms that he fully understands, and has no objection to the use of the English language. **Luxembourg:** This report is distributed by Credit Suisse (Luxembourg) S.A., a duly authorized credit institution in the Grand Duchy of Luxembourg with registered address 5, rue Jean Monnet, L-2180 Luxembourg. Credit Suisse (Luxembourg) S.A. is subject to the prudential supervision of the Luxembourg supervisory authority, the Commission de Surveillance du Secteur Financier (CSSF). **Mexico:** This document represents the vision of the person who provides his/her services to C. Suisse Asesoría México, S.A. de C.V. ("C. Suisse Asesoría") and/or Banco Credit Suisse (México), S.A., Institución de Banca Múltiple, Grupo Financiero Credit Suisse (México) ("Banco CS") so that both C. Suisse Asesoría and Banco CS reserve the right to change their mind at any time not assuming any liability in this regard. This document is distributed for informational purposes only, and does not imply a personal recommendation or suggestion, nor the invitation to celebrate any operation and does not replace the communication you have with your executive in relation to C. Suisse Asesoría and/or Banco CS prior to taking any investment decision. C. Suisse Asesoría and/or Banco CS does not assume any responsibility for investment decisions based on information contained in the document sent, as the same may not take into account the context of the investment strategy and objectives of particular clients. Prospectus, brochures, investment regimes of investment funds, annual reports or periodic financial information contain all additional useful information for investors. These documents can be obtained free of charge directly from issuers, operators of investment funds, in the Internet page of the stock exchange in which they are listed or through its executive in C. Suisse Asesoría and/or Banco CS. Past performance and the various scenarios of existing markets do not guarantee present or future yields. In the event that the information contained in this document is incomplete, incorrect or unclear, please contact your Executive of C. Suisse Asesoría and/or Banco CS as soon as possible. It is possible that this document may suffer modifications without any responsibility for C. Suisse Asesoría and/or Banco CS. This document is distributed for informational purposes only and is not a substitute for the Operations Reports and/or Account Statements you receive from C. Suisse Asesoría and/or Banco CS in terms of the General Provisions Applicable to Financial Institutions and other Legal Entities that Provide Investment Services

issued by the Mexican Banking and Securities Commission ("CNBV"). Given the nature of this document, C. Suisse Asesoría and/or Banco CS does not assume any responsibility derived from the information contained therein. Without prejudice to the fact that the information was obtained from or based on sources believed to be reliable by C. Suisse Asesoría and/or Banco CS, there is no guarantee that the information is either accurate or complete. Banco CS and/or C. Suisse Asesoría does not accept any liability arising from any loss arising from the use of the information contained in the document sent to you. It is recommended that investor make sure that the information provided is in accordance to his/her personal circumstances and investment profile, in relation to any particular legal, regulatory or fiscal situation, or to obtain independent professional advice. C. Suisse Asesoría México, S.A. de C.V. is an investment adviser created in accordance with the Mexican Securities Market Law ("LMV"), registered with the CNBV under the folio number 30070. C. Suisse Asesoría México, S.A. de C.V. is not part of Grupo Financiero Credit Suisse (México), S.A. de C.V., or any other financial group in Mexico. C. Suisse Asesoría México, S.A. de C.V. is not an independent investment adviser as provided by LMV and other applicable regulations due to its direct relationship with Credit Suisse AG, a foreign financial institution, and its indirect relationship with the entities that make up Grupo Financiero Credit Suisse (México), S.A. de C.V. **Netherlands:** This report is distributed by Credit Suisse (Luxembourg) S.A., Netherlands Branch (the "Netherlands branch") which is a branch of Credit Suisse (Luxembourg) S.A., a duly authorized credit institution in the Grand Duchy of Luxembourg with registered address 5, rue Jean Monnet, L-2180 Luxembourg. The Netherlands branch is subject to the prudential supervision of the Luxembourg supervisory authority, the Commission de Surveillance du Secteur Financier (CSSF), and of the Dutch supervisory authority, De Nederlandsche Bank (DNB), and of the Dutch market supervisor, the Autoriteit Financiële Markten (AFM). **Portugal:** This report is distributed by Credit Suisse (Luxembourg) S.A., Sucursal em Portugal (the "Portugal branch") which is a branch of Credit Suisse (Luxembourg) S.A., a duly authorized credit institution in the Grand Duchy of Luxembourg with registered address 5, rue Jean Monnet, L-2180 Luxembourg. The Portugal branch is subject to the prudential supervision of the Luxembourg supervisory authority, the Commission de Surveillance du Secteur Financier (CSSF), and of the Portuguese supervisory authorities, the Banco de Portugal (BdP) and the Comissão do Mercado dos Valores Mobiliários (CMVM). **Qatar:** This information has been distributed by Credit Suisse (Qatar) L.L.C., which is duly authorized and regulated by the Qatar Financial Centre Regulatory Authority (QFCRA) under QFC License No. 00005. All related financial products or services will only be available to Eligible Counterparties (as defined by the QFCRA) or Business Customers (as defined by the QFCRA), including individuals, who have opted to be classified as a Business Customer, with net assets in excess of QR 4 million, and who have sufficient financial knowledge, experience and understanding to participate in such products and/or services. Therefore this information must not be delivered to, or relied on by, any other type of individual. **Saudi Arabia:** This document is being distributed by Credit Suisse Saudi Arabia (CR Number 1010228645), duly licensed and regulated by the Saudi Arabian Capital Market Authority pursuant to License Number 08104-37 dated 23/03/1429H corresponding to 21/03/2008AD. Credit Suisse Saudi Arabia's principal place of business is at King Fahad Road, Hay Al Mhamadiya, 12361-6858 Riyadh, Saudi Arabia. Website: <https://www.credit-suisse.com/sa>. Under the Rules on the Offer of Securities and Continuing Obligations this document may not be distributed in the Kingdom except to such persons as are permitted under the Rules on the Offer of Securities and Continuing Obligations issued by the Capital Market Authority. The Capital Market Authority does not make any representation as to the accuracy or completeness of this document, and expressly disclaims any liability whatsoever for any loss arising from, or incurred in reliance upon, any part of this document. Prospective purchasers of the securities offered hereby should conduct their own due diligence on the accuracy of the information relating to the securities. If you do not understand the contents of this document, you should consult an authorised financial advisor. Under the Investment Fund Regulations this document may not be distributed in the Kingdom except to such persons as are permitted under the Investment Fund Regulations issued by the Capital Market Authority. The Capital Market Authority does not make any representation as to the accuracy or completeness of this document, and expressly disclaims any liability whatsoever for any loss arising from, or incurred in reliance upon, any part of this document. Prospective subscribers of the securities offered hereby should conduct their own due diligence on the accuracy of the information relating to the securities. If you do not understand the contents of this document you should consult an authorised financial advisor. **South Africa:** This information is being distributed by Credit Suisse AG which is registered as a financial services provider with the Financial Sector Conduct Authority in South Africa with FSP number 9788 and / or by Credit Suisse (UK) Limited which is registered as a financial services provider with the Financial Sector Conduct Authority in South Africa with FSP number 48779. **Spain:** This document is a marketing material and is provided by Credit Suisse AG, Sucursal en España, legal entity registered at the Comisión Nacional del Mercado de Valores for information purposes. It is exclusively addressed to the recipient for personal use only and, according to current regulations in force, by no means can it be considered as a security offer, personal investment advice or any general or specific recommendation of products or investment strategies with the aim that you perform any operation. The client shall be deemed responsible, in all cases, for taking whatever decisions on investments or disinvestments, and therefore the client takes all responsibility for the benefits or losses resulting from the operations that the client decides to

perform based on the information and opinions included in this document. This document is not the result of a financial analysis or research and therefore, neither it is subject to the current regulations that apply to the production and distribution of financial research, nor its content complies with the legal requirements of independence of financial research. **Turkey:** The investment information, comments and recommendations contained herein are not within the scope of investment advisory activity. The investment advisory services are provided by the authorized institutions to the persons in a customized manner taking into account the risk and return preferences of the persons. Whereas, the comments and advices included herein are of general nature. Therefore recommendations may not be suitable for your financial status or risk and yield preferences. For this reason, making an investment decision only by relying on the information given herein may not give rise to results that fit your expectations. This report is distributed by Credit Suisse Istanbul Menkul Degerler Anonim Sirketi, regulated by the Capital Markets Board of Turkey, with its registered address at Levazim Mahallesi, Koru Sokak No. 2 Zorlu Center Terassever No. 61 34340 Besiktas/Istanbul-Turkey. **United Kingdom:** This material is distributed by Credit Suisse (UK) Limited. Credit Suisse (UK) Limited, is authorized by the Prudential Regulation Authority and regulated by the Financial Conduct Authority and the Prudential Regulation Authority. Where this material is distributed into the United Kingdom by an offshore entity not exempted under the Financial Services and Markets Act 2000 (Financial Promotion) Order 2005 the following will apply: To the extent communicated in the United Kingdom ("UK") or capable of having an effect in the UK, this document constitutes a financial promotion which has been approved by Credit Suisse (UK) Limited which is authorized by the Prudential Regulation Authority and regulated by the Financial Conduct Authority and the Prudential Regulation Authority for the conduct of investment business in the UK. The registered address of Credit Suisse (UK) Limited is Five Cabot Square, London, E14 4QR. Please note that the rules under the UK's Financial Services and Markets Act 2000 relating to the protection of retail clients will not be applicable to you and that any potential compensation made available to "eligible claimants" under the UK's Financial Services Compensation Scheme will also not be available to you. Tax treatment depends on the individual circumstances of each client and may be subject to changes in future.

UNITED STATES: NEITHER THIS REPORT NOR ANY COPY THEREOF MAY BE SENT, TAKEN INTO OR DISTRIBUTED IN THE UNITED STATES OR TO ANY US PERSON (within the meaning of Regulation S under the US Securities Act of 1933, as amended).

This report may not be reproduced either in whole or in part, without the written permission of Credit Suisse. Copyright © 2021 Credit Suisse Group AG and/or its affiliates. All rights reserved.

21C014A_IS

Other publications from Credit Suisse

Monitor Switzerland

Q2 2021

Monitor Switzerland analyzes and forecasts developments in the Swiss economy.

June 15, 2021

Construction Index Switzerland

3rd quarter 2021

The quarterly published Construction Index Switzerland provides timely information on the economic situation in the construction industry and contains estimates and background information on revenues in the construction sector.

August 25, 2021

Real Estate Monitor

Q3 2021

The real estate monitor issues three updates a year relating to all market developments relevant to real estate, complementing the annual fundamental analyses and special themes of the Credit Suisse real estate study.

September 28, 2021

**Subscribe to our publications directly
from your relationship manager.**



CREDIT SUISSE AG

Investment Solutions & Products

Postfach

CH-8070 Zürich

credit-suisse.com